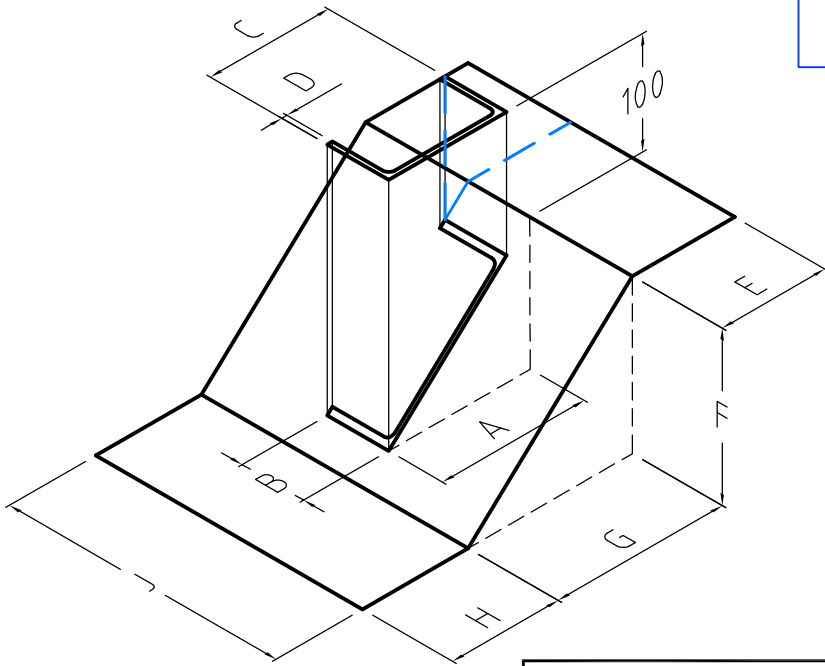
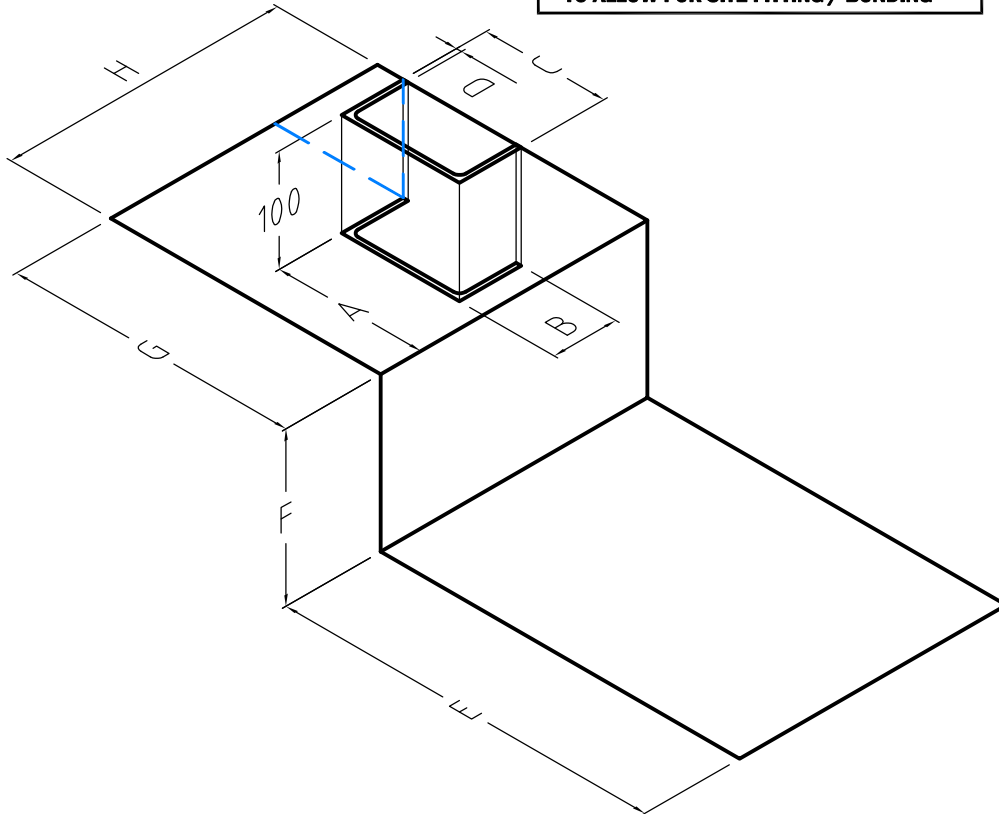


**Detail Issued For Guidance Only,  
Designer's Approval Required**



**NB : UNITS TO INCORPORATE A 100mm  
OVERLAP FLANGE (SEE DOTTED BLUE LINE)  
TO ALLOW FOR SITE FITTING / BONDING**



**NB; DO NOT SCALE - USE FIGURED DIMENSIONS ONLY.**

<b>Windpost Cloak Type 1 :</b>	
<b>(Sloping Cavity Tray)</b>	
A	
B	
C	
D	
E	
F	
G	
H	
J	
Quantity As	
Quantity Opp.	

<b>Windpost Cloak Type 2 :</b>	
<b>(Lower Gas DPC)</b>	
A	
B	
C	
D	
E	
F	
G	
H	
Quantity As	
Quantity Opp.	

<b>Zedex</b>	
<b>Ultimate</b>	



**Visqueen**  
**Contact Technical Support :**  
 t : 0333 202 6800  
 f : 0333 202 6886  
 e : enquiries@visqueen.com  
 www.visqueen.com

**Project: Standard Detail : Preformed Windpost Cloaks.**

<b>Drawing No.- PFU-536.</b>	<b>Date.- 12/18.</b>	<b>Scale.- NTS.</b>	<b>© COPYRIGHT RESERVED.</b>
------------------------------	----------------------	---------------------	------------------------------