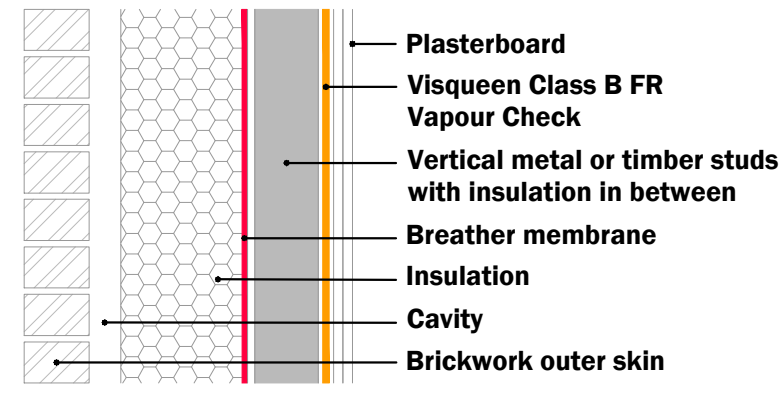
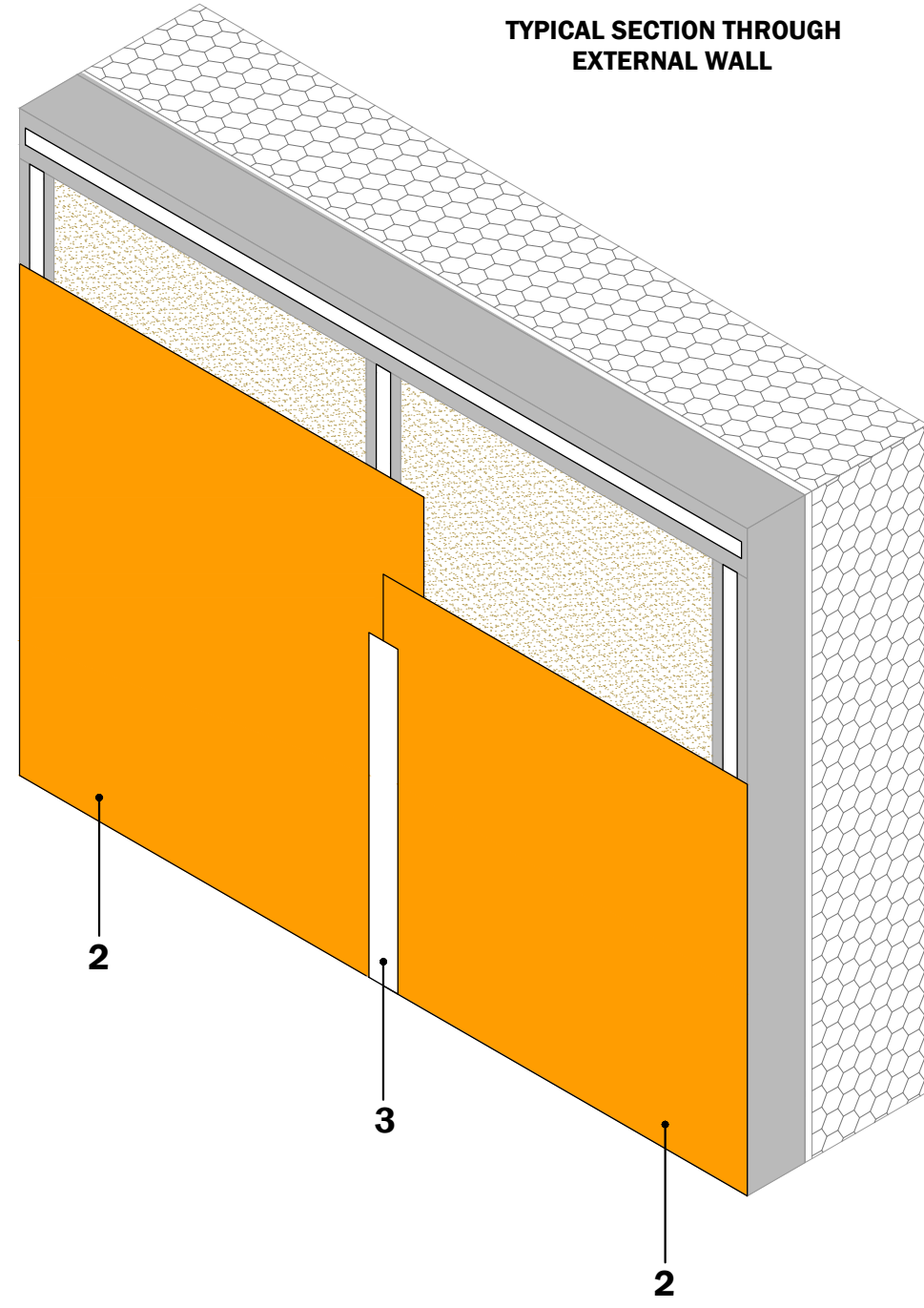
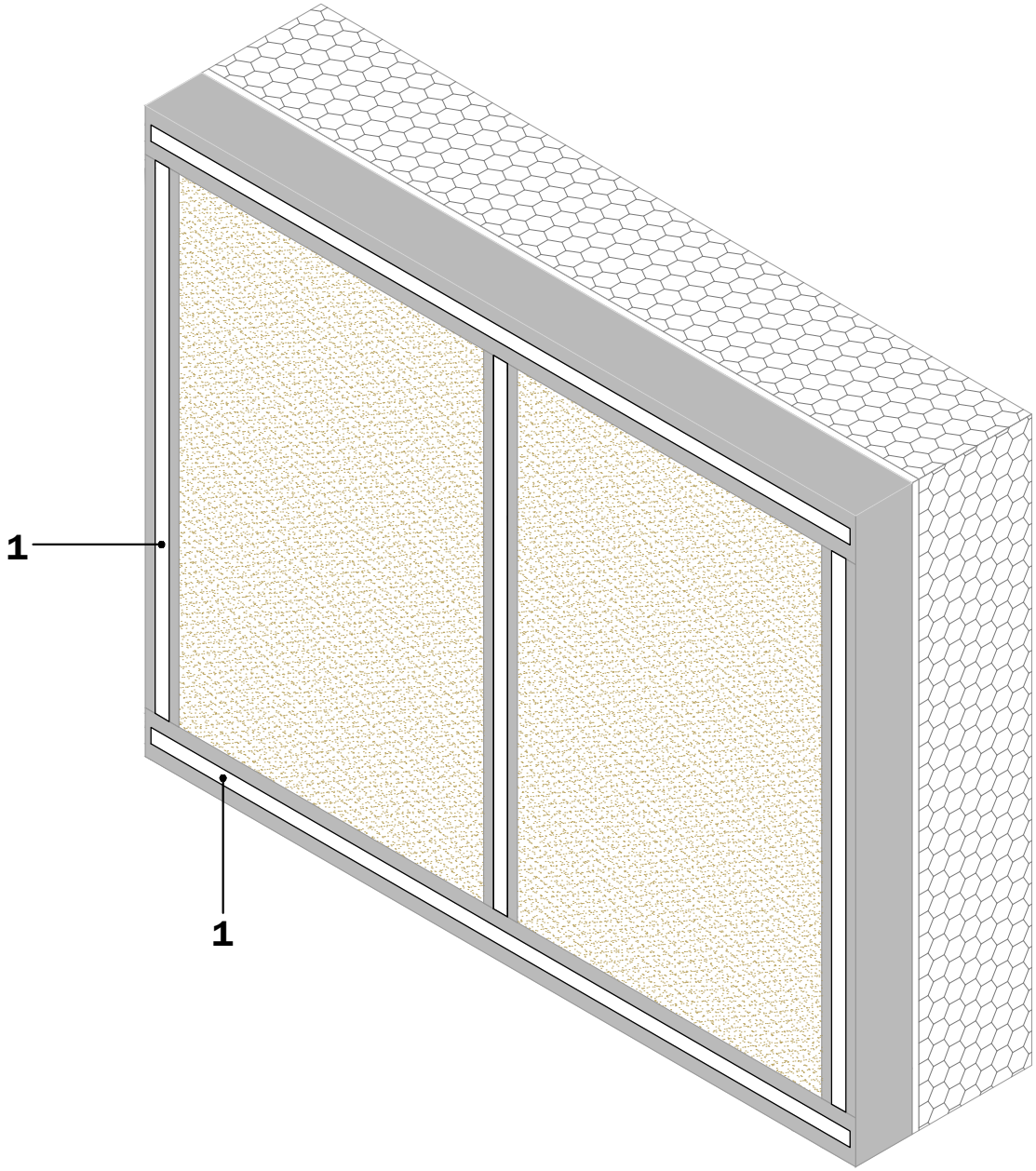


KEY :-	
1	Visqueen FR Double Sided Vapour Tape.
2	Visqueen Class B FR Vapour Check.
3	Visqueen FR Single Sided Vapour Tape.



TYPICAL SECTION THROUGH EXTERNAL WALL



© Copyright reserved. This drawing may not be reproduced or amended without prior written permission.

Detail issued for guidance only. Designer's approval required.

Site construction sequencing should be assessed before the appropriate Visqueen Standard Detail is selected and approved by the designer.

All Visqueen materials must be installed in strict accordance with the manufacturer's instructions. Refer to the current Visqueen datasheets.

For conformity with the reaction to fire classification, usage of Visqueen FR Double Sided Vapour Tape must not exceed 11% of the area of the Visqueen Class B FR Vapour Check.

For conformity with the reaction to fire classification, usage of Visqueen FR Single Sided Vapour Tape must not exceed 11% of the area of the Visqueen Class B FR Vapour Check.

Visqueen air and vapour control layers (AVCLs) should be installed in accordance with the recommendations of BS 5250:2021 Management of moisture in buildings - code of practice.

Visqueen AVCLs do require permanent mechanical fixing, normally achieved by over-boarding the AVCL with a plasterboard or other construction board.

Do not scale, use figured dimensions only. All figured dimensions are in mm.

Standard Detail



www.visqueen.com

Scale : NTS

Date : December 2022

Drawing No : FRVC-01

Revision Status : 0



Visqueen Class B FR Vapour Check

VISQUEEN
 0333 202 6800
www.visqueen.com
enquiries@visqueen.com